



MADHYA BHARAT CERAMICS

One Stop Solution for Ceramic Tower Packing

Welcome to our Company

Madhya Bharat Ceramics is a leading manufacturer of Ceramic Tower Packing for industries like Fertilizer, Chemical, Petrochemical, Pharmaceutical, Oil Refinery & Regenerative Thermal Oxidizers.

From a humble beginning, to our growing international presence, MBC remains strong and committed to providing the best possible products, services and value to our customers worldwide. We design, manufacture and supply innovative Ceramic Tower Packing to meet customer's needs.

MBC's high quality precision and compositional perfection are made possible because of extensive Research and Development along with Quality Assurance at every stage.



About The Company

Founded in the year 1962, we cater to Fertilizer industries, Chemical, Petrochemicals, Drugs, Pharmaceuticals, and environmental industry.

MBC in fact is pioneers in the field of Ceramic Tower Packing. Our factories at MANDSAUR (Madhya Pradesh) situated 85 kilometers from Ratlam (Madhya Pradesh), which is center of Bombay and Delhi Western Railway route.

The nearest airports are UDAIPUR & INDORE, which are 160 & 220 kilometers respectively away from Mandsaur.

We are making all types and sizes of Ceramic Tower Packing like Ceramic Saddles, Mini Rings, Berl Saddles, HoneyComb, Ceramic Ball, Gridblock etc.

MBC's high quality precision and compositional perfection are made possible because of our continuous research and development at every stage.

Our Packing conforms to International Standards and Customer's specification.

Made from 7500M³/Annum production capacity of ceramic packing increased to 100003/Annum owing to support from our regular buyers.

Ceramic packing is manufactured, in various grades according, to the needs of the industries such as fertilizers, chemicals, petrochemicals, oil refineries, regenerative thermal oxidizing and allied industries. Supplying Ceramic packing for Sulphuric acid industries of capacity 7500 TPD. is a landmark in the history of MBC.



Products

➤ Ceramic Saddles



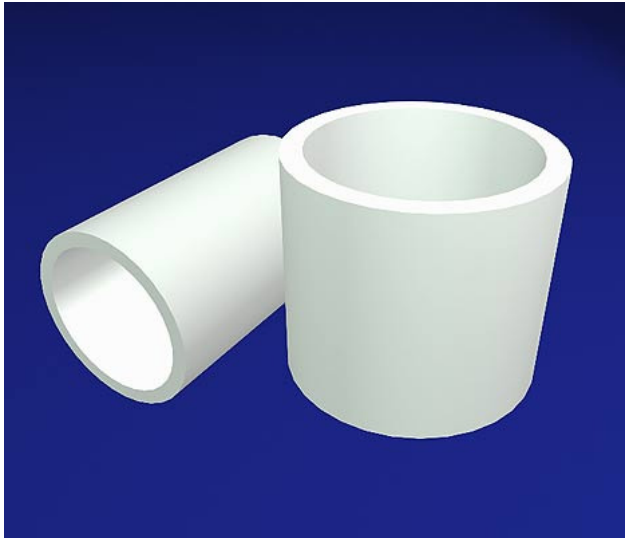
Size MM(Nominal)	12 mm	19 mm	25 mm	38 mm	50mm
A	on request	26 ± 2.6	34 ± 3	51 ± 3	68 ± 4
B	on request	18 ± 1.8	24 ± 2	35 ± 2	47 ± 2.8
C	on request	13 ± 1.3	17 ± 2	25.5 ± 2	34 ± 3
D	on request	10.5 ± 1	14 ± 1	22 ± 1	30 ± 1.8
E	on request	2.5 ± 0.25	3.5 ± 0.5	4.5 ± 0.5	6 ± 1
Quantity (Aprx ±10%) Nos. per cubic meter	on request	162500	70000	21000	9300
Weight (Aprx±10%) Kg per cubic meter	on request	593	586	594	560
% Free space (Aprx)	on request	71	77	80	79
Contact surface M ² /M ³ (Aprx)	on request	239	199	139	108
Relative efficiency M ² /M ³ free space	on request	337	258	174	137
Relative scrubbing capacity M ² /M ³ X Free space	on request	170	153	111	85
Packing Factor		110	98	52	40

➤ Berl Saddles



Size MM(Nominal)	12 mm	19 mm	25 mm	38 mm	50mm
A	on request	26 ± 2.6	34 ± 3	51 ± 3	68 ± 4
B	on request	18 ± 1.8	24 ± 2	35 ± 2	47 ± 2.8
C	on request	13 ± 1.3	17 ± 2	25.5 ± 2	34 ± 3
D	on request	10.5 ± 1	14 ± 1	22 ± 1	30 ± 1.8
E	on request	2.5 ± 0.25	3.5 ± 0.5	4.5 ± 0.5	6 ± 1
Quantity (Aprx ±10%) Nos. per cubic meter	on request	162500	70000	21000	9300
Weight(Aprx±10%) Kg per cubic meter	on request	593	586	594	560
% Free space (Aprx)	on request	71	77	80	79
Contact surface M ² /M ³ (Aprx)	on request	239	199	139	108
Relative efficiency M ² /M ³ free space	on request	337	258	174	137
Relative scrubbing capacity M ² /M ³ X Free space	on request	170	153	111	85
Packing Factor					

➤ Ceramic Ring



Size(Nominal)	-	15 x 15 x 3	19 x 19 x 3	25 x 25 x 4	35 x 35 x 4	50 x 50 x 6	75 x 75 x 8
Diameter D mm	-	15 ± 1	19 ± 1	25 ± 2	35 ± 2	50 ± 3	75 ± 3
Height H mm	-	15 ± 1	19 ± 1	25 ± 2	35 ± 2	50 ± 3	75 ± 3
Thickness T mm	-	3 ± 1	3 ± 1	4 ± 1	4 ± 1	6 ± 2	6 ± 2
Quantity (Aprx ±10%) Nos. per cubic meter	Dumped Stacked	190000 -	112000 -	44000 -	16250 -	5700 7000	- 2200
Weight (Aprx ± 10%) Kg per cubic meter	Dumped Stacked	825 -	840 -	650 -	600 -	570 700	- 560
%Free space (Aprx)	Dumped Stacked	62 -	68 -	72 -	74 -	76 74	- 72
Contact surface M ² /M ³ (Aprx)	Dumped Stacked	293 -	257 -	193 -	133 -	92 113	- 79
Relative efficiency M ² /M ³ of free space	Dumped Stacked	473 -	378 -	268 -	180 -	121 153	110 -
Relative scrubbing capacity M ² /M ³ X Free space	Dumped Stacked	181 -	175 -	191 -	98 -	70 84	- 57

Size(Nominal)	-	80 x 80 x 8	100 x 100 x 10	120 x 120 x 12	150 x 150 x 15	150 x 150 x 25
Diameter D mm	-	80 ± 4	100 ± 5	120 ± 5	150 ± 5	150 ± 5
Height H mm	-	80 ± 4	100 ± 5	120 ± 5	150 ± 5	150 ± 5
Thickness T mm	-	8 ± 2	10 ± 2	12 ± 3	15 ± 3	253
Quantity (Aprx ±10%) Nos. per cubic meter	Dumped Stacked	1278 1720	- 730	- 416	- 280	- 280
Weight (Aprx ± 10%) Kg per cubic meter	Dumped Stacked	437 588	- 563	- 482	- 592	- 844
%Free space (Aprx)	Dumped Stacked	77 56	- 77	- 75	- 74	- 56
Contact surface M ² /M ³ (Aprx)	Dumped Stacked	52 70	- 51	- 39	- 40	- 39
Relative efficiency M ² /M ³ of free space	Dumped Stacked	68 92	- 66	- 52	- 54	- 70
Relative scrubbing capacity M ² /M ³ X Free space	Dumped Stacked	40 53	- 39	- 29	- 30	- 22

It is available in Cylindrical Shape also.

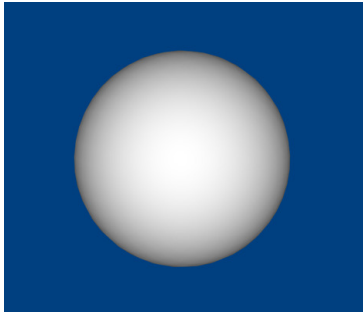


➤ Ceramic Ring Partitioned



Size(Nominal)	-	25 x 25 x 3	35 x 35 x 3	50 x 50 x 6	80 x 80 x 8	100 x 100 x 10	150 x 150 x 15
Diameter D mm	-	25 ± 2	35 ± 2	50 ± 3	80 ± 4	100 ± 5	150 ± 5
Length L mm	-	25 ± 2	35 ± 2	50 ± 3	80 ± 4	100 ± 5	150 ± 5
Thickness T mm	-	3 ± 1	4 ± 1	6 ± 2	8 ± 2	10 ± 2	15 ± 5
Quantity (Aprx ±10%) Nos. per cubic meter	Dumped Stacked	440000 -	16250 -	5700 7000	- 1720	- 730	- 280
Weight (Aprx ± 10%) Kg per cubic meter	Dumped Stacked	713 -	650 -	655 804	- 774	- 694	- 617
% Free space (Aprx)	Dumped Stacked	67 -	71 -	72 63	- 68	- 76	- 62
Contact surface M ² /M ³ (Aprx)	Dumped Stacked	232 -	165 -	112 138	- 89	- 64	- 48
Relative efficiency M ² /M ³ of free space	Dumped Stacked	346 -	232 -	156 219	- 131	- 84	- 77
Relative scrubbing capacity M ² /M ³ Free space	Dumped Stacked	155 -	117 -	81 87	- 61	- 49	- 30

➤ Inert Ceramic Balls

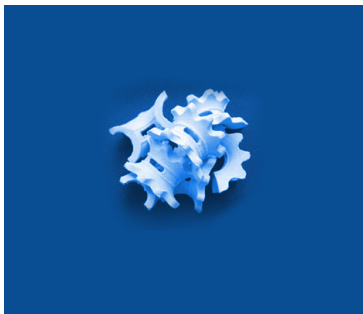


Diameter in mm	6	10	12	15	25	35	50
Quantity (Aprx ±10%) Nos. per M ³	4700000	1100000	575000	332000	71000	25000	9400
Weight (Aprx ± 10%) Kg. per M ³ contact	1300	1290	1280	1290	1265	1200	1300
Contact surface(Aprx) M ² /M ³	425	315	240	210	128	85	65
% free space	45	45	45	46	46	48	45

➤ Grid Block



➤ Ceramic Ultra



Size MM(Nominal)	25 mm	38 mm	50 mm	76 mm
Weight(Aprx±10%) Kg per cubic meter	240	200	130	100
Surface Area M ² /M ³ (Aprx)	77	78	79	77
Void Fraction (%)	78	77	75	73

Quality

❖ Water Absorbption

Water absorption is of particular interest in the ceramic packing as it indicates the degree of firing and vitreousity of the packing material.

❖ Resistance to Acid

Acid resistance indicates the resistance or the solubility of the material subjected to the attack of concentrated acid.

❖ Crushing Strength

Crushing strength is the load required to break the packing. In Ceramic rings it is applied diametrically and strength is usually expressed in Kg/linear Cm. while in case of saddles and other items the total load required in Kg. to break the piece is expressed as crushing strength.

❖ Chemical Analysis

In packing materials, the chemical analysis is only indicated since the versatility of the packing depends on the performance of the product.

❖ Raw Material Test

- Physical Inspection for colour and texture
- Particle Size
- Chemical analysis. -

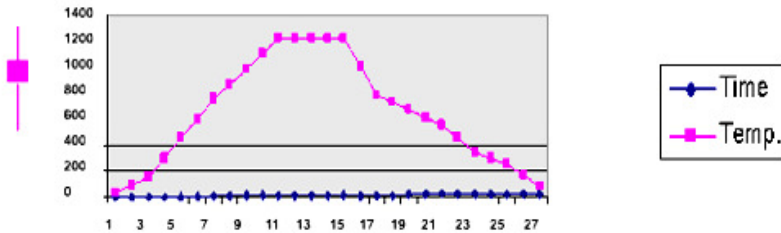
❖ Inprocess Test

- Particle size by sieve analysis
- Density of slip • Filter cake moisture content
- Extruded blank moisture after drying to leather hard condition
- Random tests for dimensions
- Visual Inspections



- Pre Kiln moisture content tests

❖ Firing Controls



- Firing control by automated combustion control systems(Air Fuel ratio, Temperature firing curve)
- Steady pre heating to avoid stresses on the ware
- Long soaking to achieve 100% penetration of heat through out the wall thickness to facilitate proper VITRIFICATION
- Rapid cooling upto 700 degree Celsius
- Slow cooling from 700 to 600 degree Celsius (to facilitate quartz inversion volume change)
- Bringing down to room temperature at a steady rate

❖ Final Product Tests

- Dimensional Checks
- Weight
- Water absorption
- Resistance to Acids and Alkalis
- Crushing strengths
- Tests conducted as per ASTM 279C, DIN and Customers specifications

❖ Quality Norms

- Quality norms are maintained as per ASTM/DIN/As per Customers specifications

Clients

Some of our prestigious clients

❖ Overseas Clients

- Crown Cork & Seal
- USA Ad west Corporation
- Cycle Therm Inc.
- Yokohama Tire
- UNILIN-US-MDF
- New England Fertilizer Company
- Paxar
- Marshal Clay Co.
- Preminco Limited
- Kuwait National Petrochemical Corporation
- Petrochemical Industries Corporation
- National Company for Sulphur Products
- Raxam Can Beverages
- S.P.V.
- P.T. Utama Inti Hasil Kimia Industry
- General Fertilizer Co.
- General Salts and Detergents Co.
- Industries Chimiques De
- Lebanon Chemical Co.
- See Sen Chemicals
- Indian Ocean Fertilizer
- Scorpion Sulphuric Acid Plant
- NamZinc (PTY) Limited
- Pedang Industries

❖ Indian Clients

- Dharmsi Morarji Chemicals Co. Limited
- Fertilizer Corporation of India Limited
- Fertilizer & Chemicals Travancore Limited
- Furnace Fabrica (Bombay) Pvt. Limited
- Grasim Industries Limited
- Gujrat State Fertilizer Corporation
- Hindustan Zinc Limited
- Hindustan Copper Limited
- Hindustan Leaver Ltd.
- Pyrites Phosphates & Chemicals Limited
- Larsen & Toubro Limited
- Monsanto DMCC Enviro-tech & Engineering Ltd.



Testimonials

❖ CELLSTONE, INC

To whom it may concern:

We have been supplying Madhya Bharat Ceramic Intalox saddles to our end users for approximately three years.

Richard grado, President

❖ DAINAN TRADING CO. LTD.

To whom it may concern:

This is to certify that Madhya Bharat Ceramics Naya Pura Road, Mandasaur are regularly supplying Ceramic packings to us for various applications.

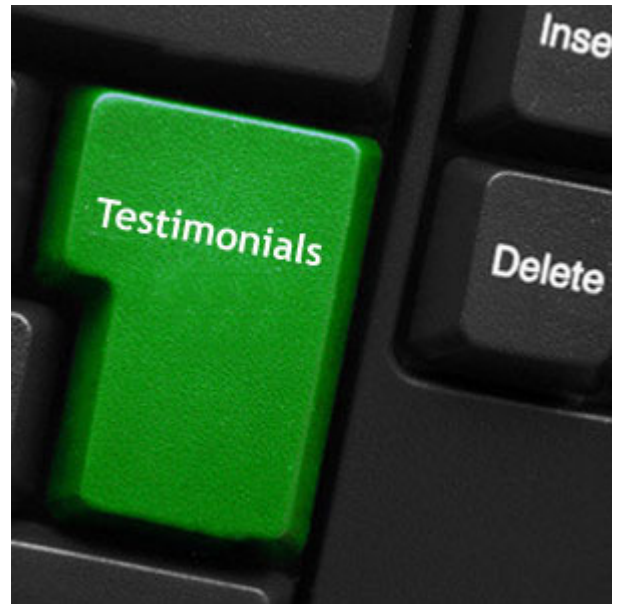
T. Takeshita (GM)

❖ MONSANTO-DMCC ENVIRO-TECH and ENGINEERING LTD.

To whom it may concern:

This is to certify that Madhya Bharat Ceramics Naya Pura road, Mandasaur has been our regular supplier since 25 years for ceramic tower packings.

Y V Shetty (GM)



Advantages

There are innumerable advantages of dealing with MBC. Some of them are being highlighted here

❖ Quality

Die cast forming ensures higher compressive strength and uniform shape. Absence of occlusions in the body resulting in higher thermal shock resistance. Testing Certifications of SGS, Lloyds or any other international agency on demand. Needless to say that our quality is self-evident and is dependable.

❖ Experience

Dedicated to Ceramic Tower Packing for More than four Decades Experience. MBC is one of the most experienced companies that can be trusted for excellent products. After all experience does count.

❖ Reliability

Capacity to produce large quantities with committed delivery schedules. Our clients endorse it Single order supply to Oswal Chemicals & Fertilizers Ltd., Paradeep (7500 TPD Sulphuric Acid plant with LURGI Technology) 15 International Plant for Sulphuric Acid Projects using Monsanto Technology, More then 5000 M3 of ULTRA as heat sink media to various clients in USA.

❖ Conclusion

This is obvious that MBC is a mark of ultimate quality and reliability.



Contacts

Madhya Bharat Ceramics

Nayapura Road, Mandsaur (MP) - 458001 India

Phone :+91-7422-222301, Fax :+91-7422-245301

Mobile :+91-94251-05355

Email : vinod@mbctower.com,

Website : www.mbctower.com

